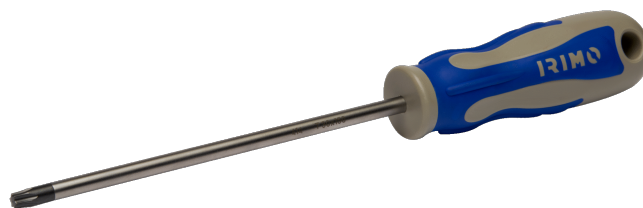




414-20-100

Chave de parafusos Torx T20X100











## DETALHES DO PRODUTO

- Para parafusos TORX®
- Ponta com acabamento preto para maior precisão
- Para uso intensivo
- Pega de dois componentes para uma aderência confortável e transferência de binário elevado
- O formato da pega impede o rolamento
- Furo para pendurar integrado
- Lâmina de liga de aço de alto desempenho com revestimento cromado e totalmente endurecida
- Lâmina permanentemente marcada com o tamanho e número de peça para fácil identificação



## ATRIBUTOS DO PRODUTO

Produto								
414-20-100	T 20	3.84 mm	100 mm	4 mm	26 mm	90 mm	190 mm	45 g